

491 LAWRENCE AVENUE WEST

MEDICAL SPACE

FOR LEASE

BATHURST STREET &
LAWRENCE AVENUE WEST (TORONTO, ON)



LOCATION

- Southeast Corner of Bathurst Street & Lawrence Avenue West

MEDICAL SPACE AVAILABLE

AVAILABILITY

891 sq. ft. up to 4,103 sq. ft.

SITE FEATURES

- Medical/dental tenants including:
 - LifeLabs
 - X-Ray and Pharmacy
 - Cardiology
 - Renovated lobby and hallways
 - TTC access

DEMOGRAPHICS

- Heart of mature neighbourhood with office, national retail, single family & multi-residential
- Retirees and young families
- Average household income: \$162,766 (within 3 kilometres)
- Trade area population: 124,761 (within 3 kilometres)

Owned & Managed By:

**Firm
Capital**
Firm Capital Properties Inc.

**MediLife Medical &
Professional Centres**

FIRM CAPITAL PROPERTIES INC. LEASING CONTACT

Chris Serrie, National Director of Leasing

163 Cartwright Avenue, Toronto, ON M6A 1V5

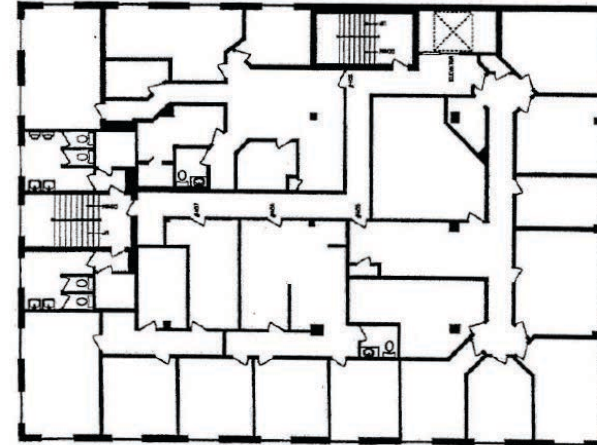
T. 416.635.0221 ext. 349 | **E.** cserrie@firmcapital.com

491 LAWRENCE AVENUE WEST

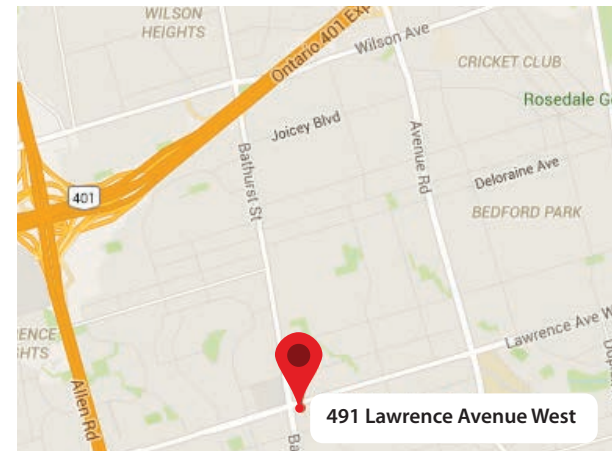
MEDICAL SPACE

FOR LEASE

BATHURST STREET &
LAWRENCE AVENUE WEST (TORONTO, ON)



Typical Floor Plate - 4th Floor



Owned & Managed By:

**Firm
Capital**

Firm Capital Properties Inc.

**MediLife Medical &
Professional Centres**

FIRM CAPITAL PROPERTIES INC. LEASING CONTACT

Chris Serrie, National Director of Leasing

163 Cartwright Avenue, Toronto, ON M6A 1V5

T. 416.635.0221 ext. 349 | E. cserrie@firmcapital.com